



MAINTENANCE AND CARE INSTRUCTIONS

Olympia products are designed and engineered under strict quality standards. Regular and proper care of our products will ensure years of trouble free service. To clean, simply wipe with a damp, soft cloth. Do not use abrasive or harsh cleaners as they may result in finish damage. Regularly remove and clean minor debris from the aerator.

TO SET OR ADJUST TEMPERATURE LIMIT STOP

Caution: Valve is preset at the factory at maximum setting. Adjust as necessary. Please see instructions below:

1. Turn off water at the source and relieve pressure.
2. Remove handle (A) by removing hot/cold button and loosening handle set screw, lift up.
3. Unscrew cap (B) and retaining nut (C) by turning counter clockwise.
4. Raise the red adjustment ring on the ceramic disc cartridge.
5. Turn adjustment ring counter clockwise to decrease temperature setting. Replace.
6. Reassemble and test until desired temperature is reached. (Note: Ensure a proper alignment of cartridge with notch in valve body.)

TROUBLE SHOOTING

A. If faucet has low flow:	1. Ensure water supplies are fully on.
	2. Remove aerator, clean all internal debris and tighten the aerator back.
	3. If low flow continues, remove and clean cartridge (D) by following procedures above.
B. If water leaks under the faucet:	1. Check SST flex hose and center outlet line connections and supply line hookups to ensure they are tightly fastened.
C. If water leaks below the handle:	1. Ensure assembly of cartridge (D), retaining nut (C) and cap (B) are securely tighten. Replace cartridge (D) if necessary.

OLYMPIA FAUCETS, INC. LIMITED LIFETIME WARRANTY *

Olympia Faucets, Inc. warrants its products to the original consumer purchaser to be free from defects in material and workmanship as long as the consumer purchaser owns it. Dated proof of purchase must accompany all warranty claims. PVD finishes carry a lifetime warranty in residential service.

Olympia Faucets, Inc. will replace, free of charge, to the original consumer purchaser, any and all parts that prove defective under normal installation, use, and service. Damage as a result of misuse, abuse, accident, or improper installation, will consequentially void this warranty. Replacement parts can be obtained from your local dealer or directly from Olympia Faucets. Olympia Faucets, Inc. recommends using a certified plumber for all faucet installation and repair.

This warranty is limited to replacement of defective parts only. Incidental and consequential damages, labor charges, repair, or replacement costs are expressly excluded. Some states do not allow the exclusion or limitation of incidental or consequential damages, so the above limitation may not apply to you. This warranty gives you specific legal rights, as you may have other rights of which vary from state to state.

Installation or maintenance and cleaning must be in compliance with instructions furnished with every Olympia product. If you find a problem with your product, please immediately contact your nearest Olympia Faucets, Inc. dealer or sales representative.

* 2 year limited warranty on commercial and multi-family projects.



INSTALLATION AND MAINTENANCE INSTRUCTIONS FOR OLYMPIA SINGLE HANDLE KITCHEN PULLOUT FAUCET

THIS PRODUCT MEETS THE FOLLOWING STANDARDS: ASME A112.18.1 ~ ANSI A117.1 ~ ANSI / NSF 61, SECTION 9 ~ UPC / IAPMO LISTED / ADA COMPLIANT ~ COMPLIES WITH CALIFORNIA LEAD PLUMBING LAW

PRODUCT NUMBERS

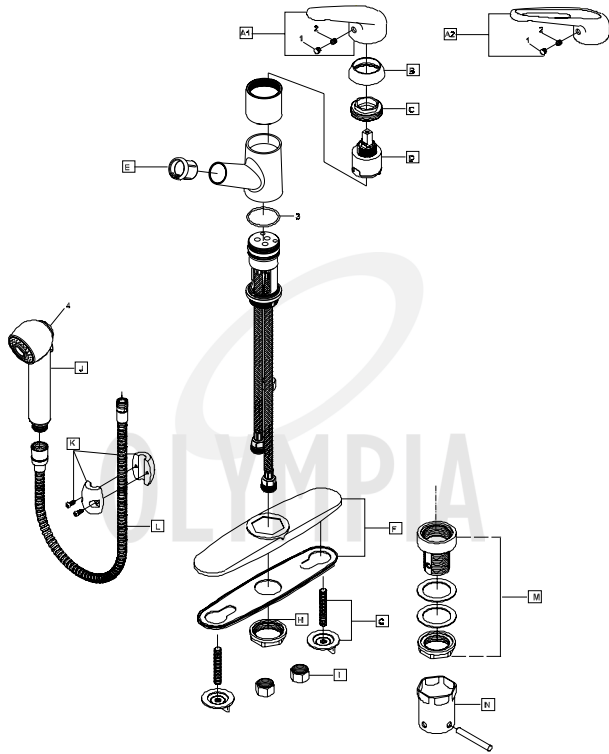
#K-5030 Metal Lever Handle ~ Pullout Spray

#K-5050 Metal Loop Handle ~ Pullout Spray





Thank you for purchasing this quality product. Olympia products are rigorously tested to provide long service under normal conditions. Prior to installation, familiarize yourself with this parts diagram. Make sure that you have all of the illustrated parts for your Olympia product before installation.



ITEM #	DESCRIPTION	ITEM #	DESCRIPTION		
M	OP-520006	1 Hole Mounting Assembly	A1	OP-120001	Metal Lever Handle
N	OP-520007	Mounting Tool	A2	OP-120003	Metal Loop Handle
1	OP-490005	Button	B	OP-420008	Cap
2	OP-490029	Allen Screw	C	OP-420009	Retainer Nut
3	OP-420010	O-Ring	D	OP-320001	Ceramic Disc Cartridge
4	OP-420017	Spray head Button	E	OP-420011	Spray head support
			F	OP-420013	Deck Plate & Base Gasket
			G	OP-520003	Mounting Bolts & Nuts
			H	OP-520004	Locknut
			I	OP-590001	Supply Nut
			J	OP-420016	Pullout Spray head
			K	OP-420014	Weight
			L	OP-420015	Spray Hose



For more care information or trouble shooting inquiries about your Olympia product, please call:
OLYMPIA FAUCETS, INC. (888) 772-7701
 Central Standard Time: 8:00am ~ 7:00pm
www.olympiafaucets.com

INSTALLATION INSTRUCTIONS

Tools you will need:

- Plumbers Putty
- Teflon Tape
- Screwdriver
- Flexible Supply Lines
- Pipe Wrench
- Adjustable Wrench
- Basin Wrench
- Soft Cloth

3 HOLE FAUCET INSTALLATION:

1. Carefully shut off both hot and cold water supplies from under the sink. Plug the sink drain with a soft cloth to prevent intrusion of debris or the loss of any faucet parts. If this installation is for a replacement, carefully remove the existing faucet and clean the entire surface of the sink mounting holes.
2. Position the faucet on the top of Deck Plate(F), and tighten the locknut (H) to secure deck plate to the faucet. Thread mounting bolts to the Deck Plate (F). Place adequate amount of plumbers putty along the base gasket. Put base gasket under deck plate. Place Deck Plate with Base Gasket (F) on the mounting surface. Lead supply lines through the center hole.
3. Attach mounting nuts (G) onto the bolts and tighten until the faucet is securely in place. Do not overtighten.
4. Connect spray head (J) to the spray hose (L). Insert the spray hose assembly (L) through the faucet opening and let all the spray hose run into the faucet opening.
5. From below, attach the weight (K) onto the spray hose (L) and connect the spray hose (L) to the center outlet line.
6. Connect stainless steel supply lines to hot (LEFT INLET) and cold (RIGHT INLET) water supplies. Use with Teflon tape for threaded connections.
7. Turn on the hot and cold water. Check all around for any leaks.

1 HOLE FAUCET INSTALLATION:

1. Carefully shut off both hot and cold water supplies from under the sink. Plug the sink drain with a soft cloth to prevent intrusion of debris or the loss of any faucet parts. If this installation is for a replacement, carefully remove the existing faucet and clean the entire surface of the sink mounting holes.
2. Thread the 1 hole mounting assembly (M) to the faucet from the bottom.
3. Position the faucet, and from below, tighten the locknut with the help of mounting tool (N) to secure faucet to the mounting surface, Do not overtighten.
4. Connect spray head (J) to the spray hose (L). Insert the spray hose assembly (L) through the faucet opening and let all the spray hose (L) run into the faucet opening.
5. From below, attach the weight (K) onto the spray hose (L) and connect the spray hose (L) to the center outlet line.
6. Connect stainless steel supply lines to hot (LEFT INLET) and cold (RIGHT INLET) water supplies. Use with Teflon tape for threaded connections.
7. Turn on the hot and cold water. Check all around for any leaks.